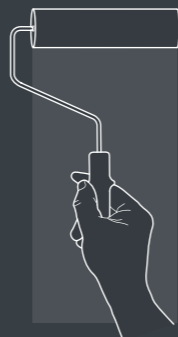




ISTRUZIONI PER L'APPLICAZIONE DEL PRODOTTO

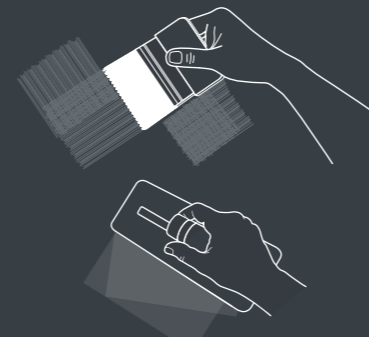
1 PREPARAZIONE DEI SUPPORTI

Per un risultato durevole, pulire la superficie da rivestire, eliminando ogni traccia delle pitture precedenti, soprattutto se non completamente aderenti al muro. Poi, applicare uno strato di Fondo 2000. Essiccazione 12/24 ore.



2 APPLICAZIONE DI ART DECOR FONDO

Applicare uno strato di Art Decor Fondo, usando un rullo a pelo corto. Resa di Art decor Fondo: 10 m²/lt. Sovrapplicazione: 4-6 ore a seconda della temperatura ambientale.



3 APPLICAZIONE DI BELLAGIO

Applicare Bellagio con il frattone di plastica o di acciaio inox, o con lo spalter a seconda del risultato desiderato. **Effetto spatolato:** applicare Bellagio non diluito con una spatola di plastica o un frattone inox per ottenere un effetto vellutato, liscio. **Effetto pennellato:** diluire Bellagio con il 20% d'acqua e applicare con uno spalter incrociando le pennellate.

USAGE INSTRUCTIONS

1 SURFACE PREPARATION

In order to get a durable result, clean the surface, removing any previous paints, especially where not completely adherent. Then, apply just one coat of Fondo 2000. Drying 12/24 hrs.

2 APPLICATION OF ART DECOR FONDO

Apply one coat of Art Decor Fondo using a short hair roller. Coverage: Art Deco Fondo: 10 m²/lt. Recoatings: 4-6 hours depending on the ambient temperature.

3 APPLICATION OF BELLAGIO

Apply Bellagio both with a stainless steel or plastic trowel and a paintbrush spalter, in order to get different effects. **Troweled effect:** apply Bellagio, as it is, with a stainless steel or plastic trowel to get a velvety smooth effect. **Brush effect:** add 20% of water in Bellagio and apply it with a paintbrush spalter by crossing the strokes, in order to get a full-bodied effect.

CONSEIL DE MISE EN ŒUVRE DU PRODUIT

1 PRÉPARATION DES SUPPORTS

Pour obtenir de meilleurs résultats il faut bien nettoyer la surface à traiter, en enlevant les anciennes peintures qui n'adhèrent plus et en appliquant une couche de Fondo 2000. Séchage 12/24 heures.

2 APPLICATION DE ART DECOR FONDO

Appliquer une couche de Art Decor Fondo en utilisant un rouleau à poil court. Rendement Art Decor Fondo: 10 m²/lt. Recouvrable: 4-6 heures selon la température ambiante.

3 APPLICATION DE BELLAGIO

Appliquer Bellagio avec la taloche en plastique ou en acier inox, ou avec le spalter selon le résultat qu'on veut obtenir. **Effet classique (à la spatule):** appliquer Bellagio sans le diluer avec une spatule en plastique ou une taloche en acier inox pour obtenir un effet velouté, lisse. **Aspect coup de pinceau:** diluer Bellagio avec 20% d'eau et appliquer avec un spalter en croisant bien les mouvements.

INFORMAZIONI TECNICHE

RESA:
spatola di plastica o frattone inox: circa 12 m²/lt
spalter: circa 10 m²/lt
PULIZIA ATTREZZI: acqua e sapone
TEMPERATURA DI STOCCAGGIO: +5°C/+35°C

TECHNICAL INFORMATION

COVERAGE:
trowel application: about 12 m²/lt
spalter: about 10 m²/lt
TOOLS CLEANING: water and soap
STORAGE TEMPERATURE: +5°C/+35°C

INFORMATION TECHNIQUE

RENDEMENT:
à la spatule ou taloche en inox: environ 12 m²/lt
spalter: environ 10 m²/lt
NETTOYAGE DES OUTILS: eau et savon
TEMPÉRATURE DE STOCKAGE: +5°C/+35°C



Boero Bartolomeo S.p.A.
I - 16121 Genova - Via Macaggi, 19 - Tel. +39 010.5500.1 - Fax +39 010.5500.305
www.boero.it - email: sales.boero@boero.it

MADE IN ITALY



P09994620001000



ARTDECOR



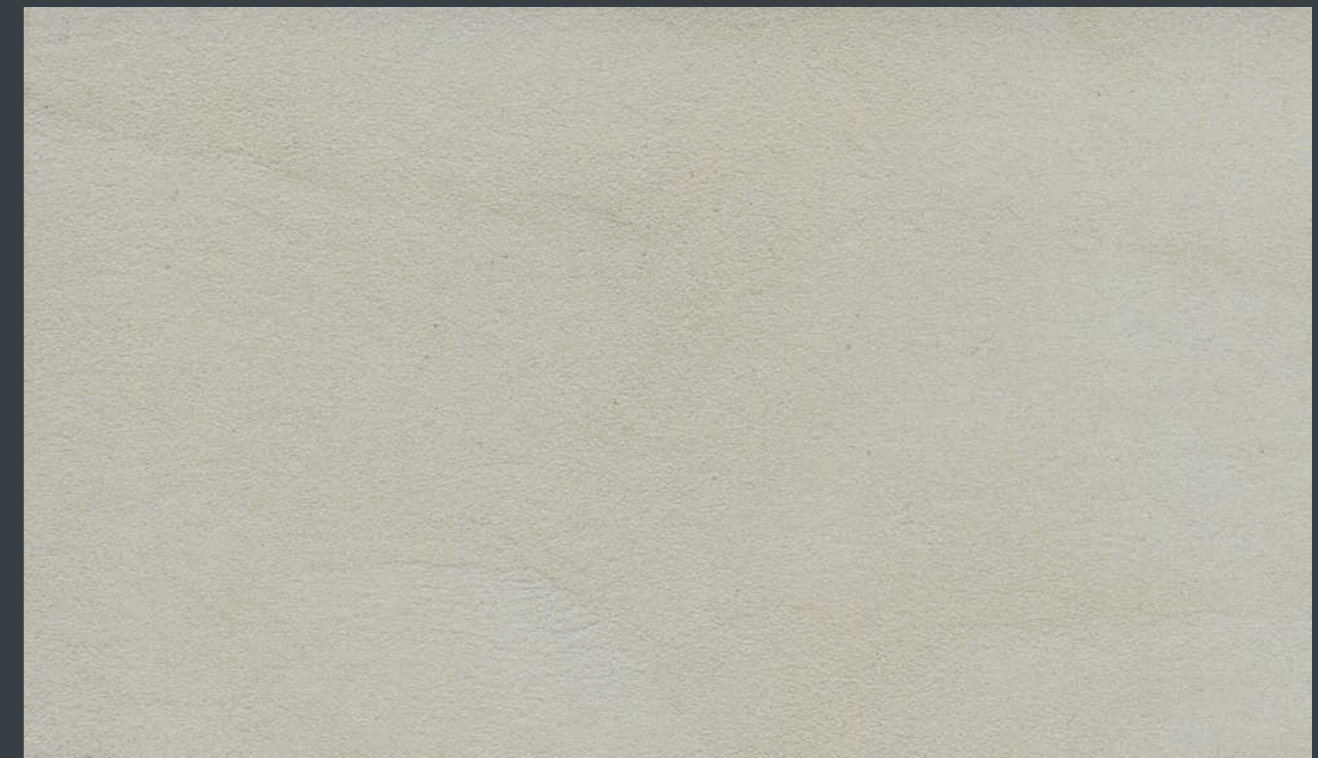
BELLAGIO

FINITURA CON RIFLESSI PERLESCENTI
PEARLESCENT EFFECT | EFFET PERLE



ARTDECOR
BELLAGIO

FINITURA CON RIFLESSI PERLESCENTI
PEARLESCENT EFFECT
EFFET PERLE

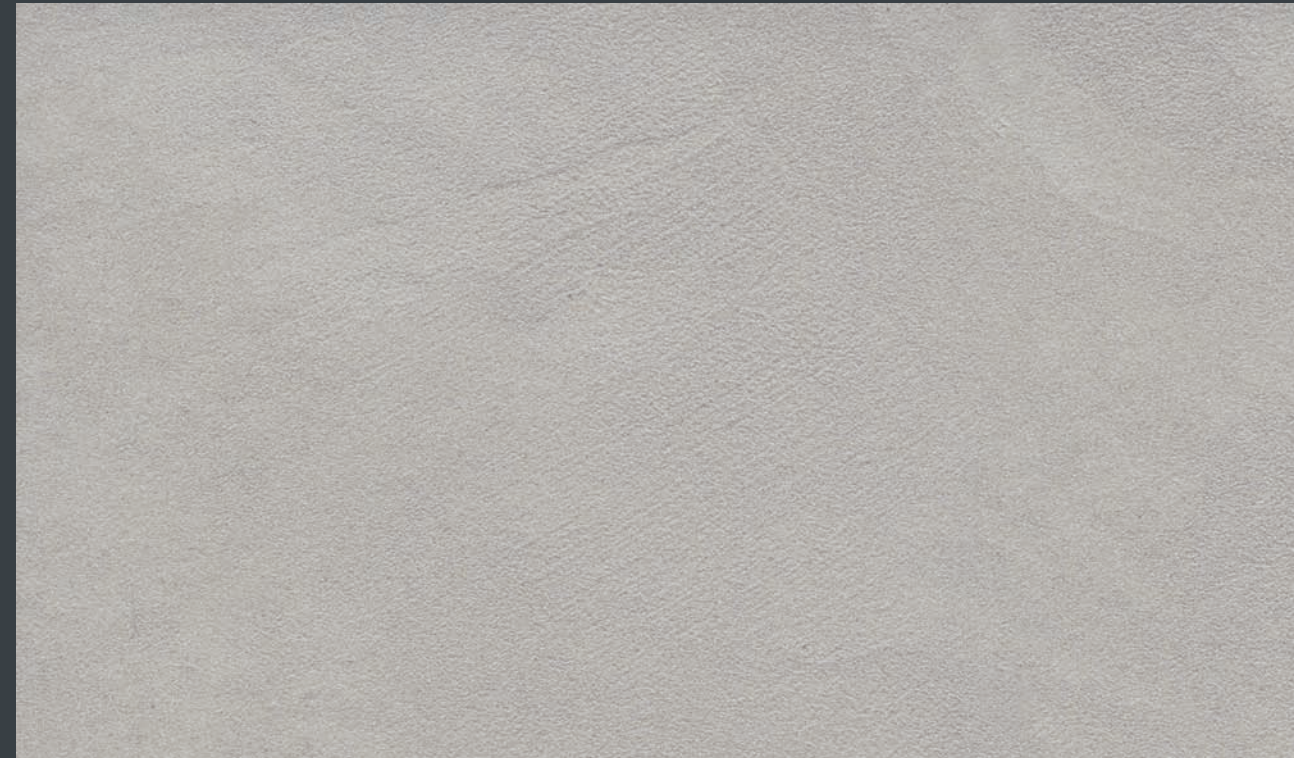


BASE ORO EFFETTO SPATOLATO

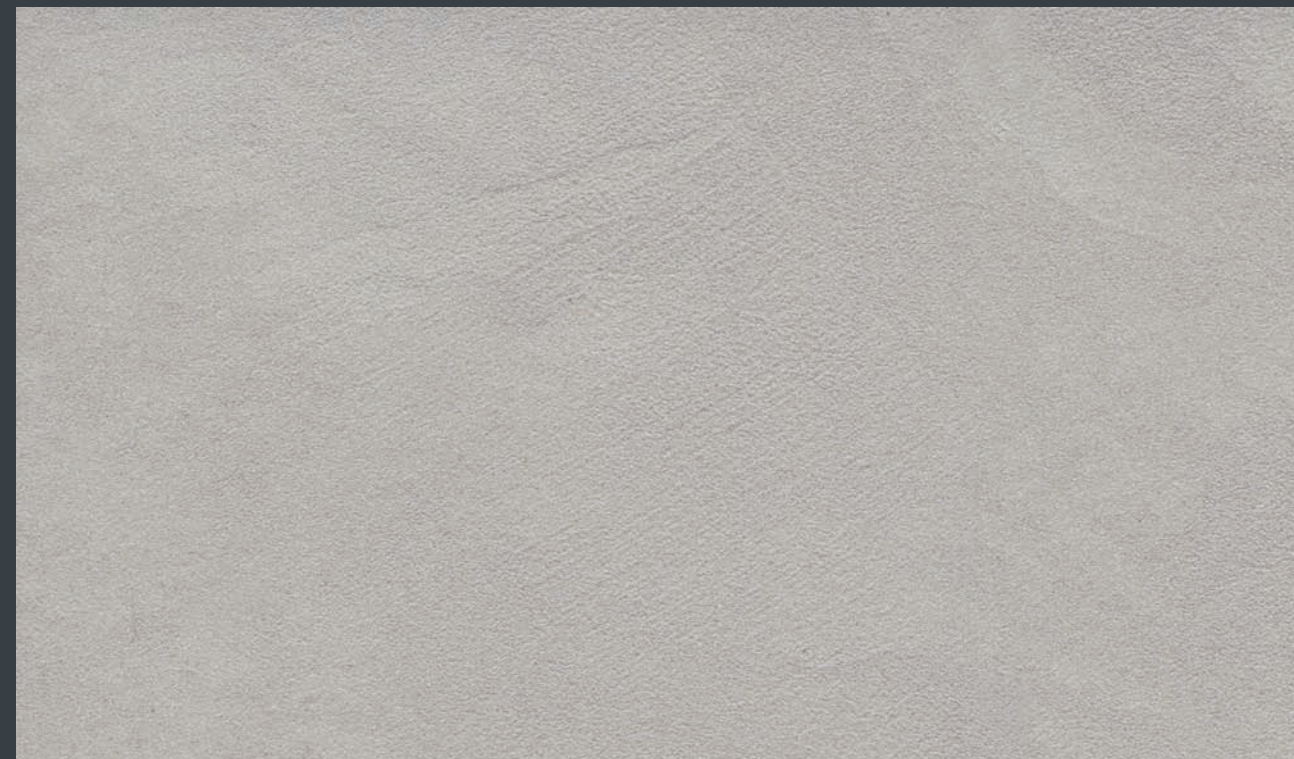


EFFETTO PENNELLATO - BELLAGIO ORO 10

Tutte le tinte riportate sulla presente cartella sono da considerarsi puramente indicative
All colors shown on this colour card are merely indicative
Toutes les couleurs présentées sur ce tableau sont à titre indicatif



BASE ARGENTO EFFETTO SPATOLATO



BASE ARGENTO EFFETTO PENNELLATO

Tutte le tinte riportate sulla presente cartella sono da considerarsi puramente indicative
All colors shown on this colour card are merely indicative
Toutes les couleurs présentées sur ce tableau sont à titre indicatif



BELLAGIO ARGENTO 85



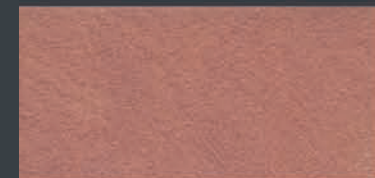
BELLAGIO ARGENTO 86



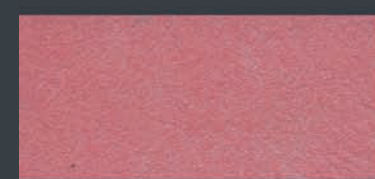
BELLAGIO ARGENTO 46



BELLAGIO ARGENTO 34



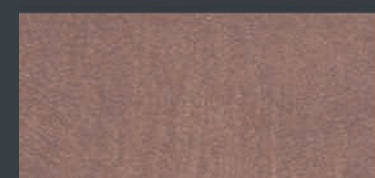
BELLAGIO ARGENTO 40



BELLAGIO ARGENTO 38



BELLAGIO ARGENTO 58



BELLAGIO ARGENTO 57



BELLAGIO ARGENTO 43



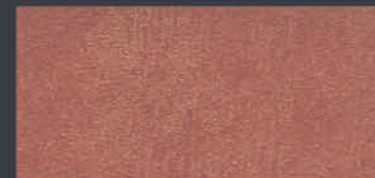
BELLAGIO ARGENTO 03



BELLAGIO ARGENTO 73



BELLAGIO ARGENTO 07



BELLAGIO ARGENTO 36



BELLAGIO ARGENTO 32



BELLAGIO ARGENTO 59



BELLAGIO ARGENTO 92



BELLAGIO ARGENTO 47



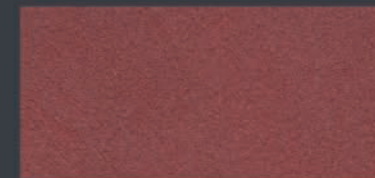
BELLAGIO ARGENTO 44



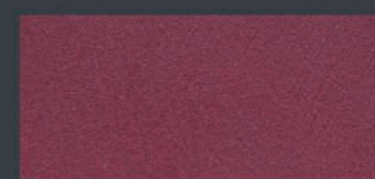
BELLAGIO ARGENTO 74



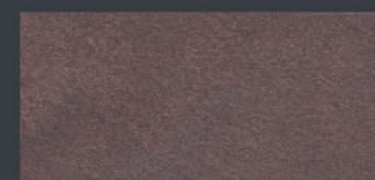
BELLAGIO ARGENTO 75



BELLAGIO ARGENTO 05



BELLAGIO ARGENTO 29



BELLAGIO ARGENTO 56



BELLAGIO ARGENTO 91



BELLAGIO ARGENTO 51



BELLAGIO ARGENTO 25



BELLAGIO ARGENTO 12



BELLAGIO ARGENTO 80



BELLAGIO ARGENTO 20



BELLAGIO ARGENTO 16



BELLAGIO ARGENTO 18



BELLAGIO ARGENTO 48



BELLAGIO ARGENTO 54



BELLAGIO ARGENTO 63



BELLAGIO ARGENTO 26



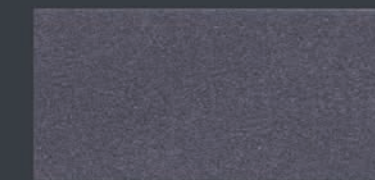
BELLAGIO ARGENTO 19



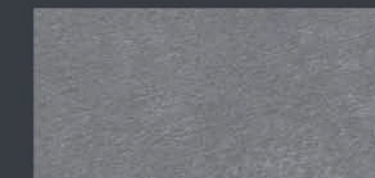
BELLAGIO ARGENTO 27



BELLAGIO ARGENTO 69



BELLAGIO ARGENTO 15



BELLAGIO ARGENTO 02



BELLAGIO ARGENTO 66



BELLAGIO ARGENTO 78



BELLAGIO ARGENTO 77



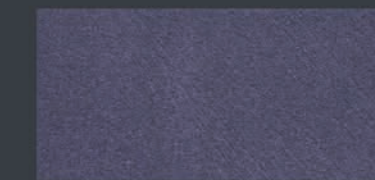
BELLAGIO ARGENTO 79



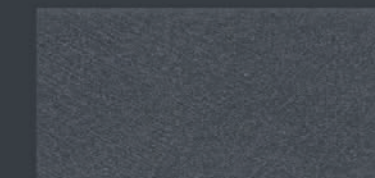
BELLAGIO ARGENTO 24



BELLAGIO ARGENTO 70



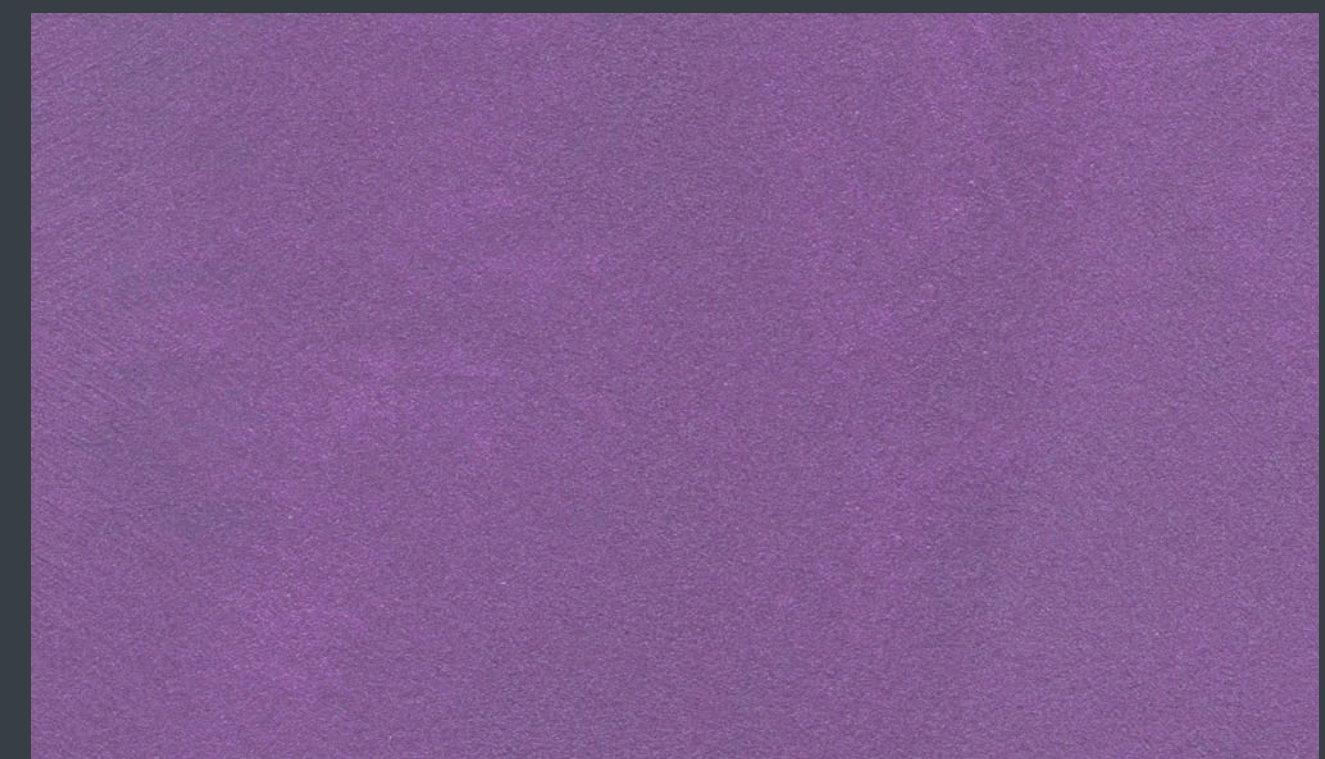
BELLAGIO ARGENTO 94



BELLAGIO ARGENTO 67



EFFETTO SPATOLATO - BELLAGIO ARGENTO 09



EFFETTO PENNELLATO - BELLAGIO ARGENTO 71